

INTERNATIONAL JUDO FEDERATION



Judogi

Reglementation

I.J.F.



SUMMARY

Guidance for IJF approved judogi

- 1. IJF Official Judogi**
- 2. Guideline for judogi manufacturers**
 - 2a. Fabric material**
 - 2b. Fabric weave**
 - 2c. Sewing specification**
 - 2c1. Jacket**
 - 2c2. Trouser**
 - 2c3. Belt**

Guidance for IJF Approved Judogi

1. IJF Official Judogi

International Judo Federation has established a system of technical approval for Judogi and belt which must be used during IJF official events.

Judogi must have Tag with its Official Label with an optical code provided by IJF which cannot be falsified.

One IJF Official Stick on Jacket, one on Trousers and one on Belt.

All Judogi and belts for IJF official events must conform to these requirements before 1 January 2011 and must be obligatory with the official Tag of the IJF or else it won't be allowed in competition.

Example of the official stick for Judo-gi and belt: (Fig. 1)



- 1a) Only companies who have signed "IJF official supplier agreement" can obtain the Tag with its Official Label. To become an IJF official supplier, a company must contact IJF Treasury office for the registration procedure.
- 1b) If a company approved as an official supplier needs to obtain the Official Label provided by IJF, the manufacturer of the company must produce Judogi and belt in accordance with the rules. Then, the following must be sent to one of the official IJF testing laboratories for inspection and approval:
 - One white Judogi (jacket and trousers), size 180
 - One blue Judogi (jacket and trousers), size 180
 - Two samples of the jacket's fabric, part above the belt (grain stitches):
 - o Color: white and blue
 - o Dimensions: length 1,5m, width – width of the roll of the fabric
 - o Two black belts (Length of the belt to be sent should be between 2,5m and 3m)
- 1c) If an approved Judogi and belt with the Official Logo Label used by a contestant during IJF event is found to be a nonconforming product, it will be reported to IJF. If the official supplier who provided the nonconforming product will be recognized as inaccurate, he shall receive penalty eventually leading to exclusion of the title of official supplier by the IJF Bureau. If a competitor or his team is recognized as inaccurate, they will receive penalty.

2. Guideline for Judogi Manufacturers

Since Judo is a sport of combat opposing two athletes, Judogi must not be a tool used against the opponent.

2a) Fabric material

2a(1) The fabric for Judogi must not be too thick, too rigid and too slippery for the opponent to take a grip.

2a(2) The fabric of Judogi must be cotton or cotton blend with more than 70% Cotton, and must have good hand-feeling. Blending components other than cotton (less than 30%) can be chemical fibers, such as Rayon, Nylon, Polyester, etc.

Note: The use of chemical fiber will increase the strength and reduce the weight of the fabric. On the other hand, too much use of chemical fibers makes the fabric less sweat-absorbing.

2a(3) The fabric must have an appropriate solidity. Therefore, weaker fabric must not be used intentionally.

2a(4) The fabric weight (after new and unused jacket is washed and dried) must be between 700g/m² and 1000g (1 kg)/m²

2a(5) Judogi white must have the color of cotton, that is, natural white or off-white.

2a(6) The official standard color for Judogi blue must be between Pantone number n°18-4051TCX(TPX) and n°18-4039TCX(TPX) on the textile Pantone scale and between n°285M and n° 286M on the print Pantone scale.

2b) Fabric weave system

2b(1) The jacket of Judogi is composed of two parts, upper jacket part (approximately above the belt position) and lower jacket part (approximately below the belt position). Upper jacket part must be Sashiko-weave fabric. (Sashiko is like grain stitches.)

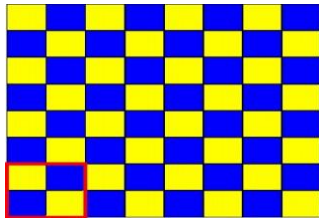
The lower jacket part must be light-weight and strong plain-weave or twill-weave fabric, which is combined with diamond patterned Sashiko weave. (See the pictures below and Fig. 13, part A)

Note 1: Lower jacket (lower side) part needs lightness rather than strength, therefore, diamond -patterned fabric is generally used. (More yarns, heavier is the weight.)

Note 2: Fabric face must be on the right face of Judogi, and reverse use is not allowed.

Fig. 2

Plain Weave



Float



Textile

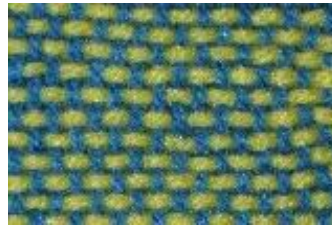
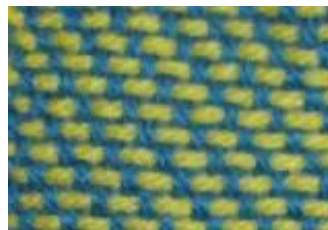
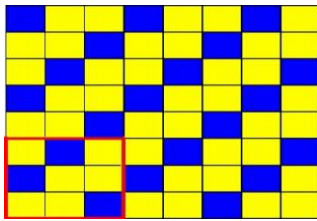


Fig. 3

Twill Weave



The red square is just showing the repetitive weave system.

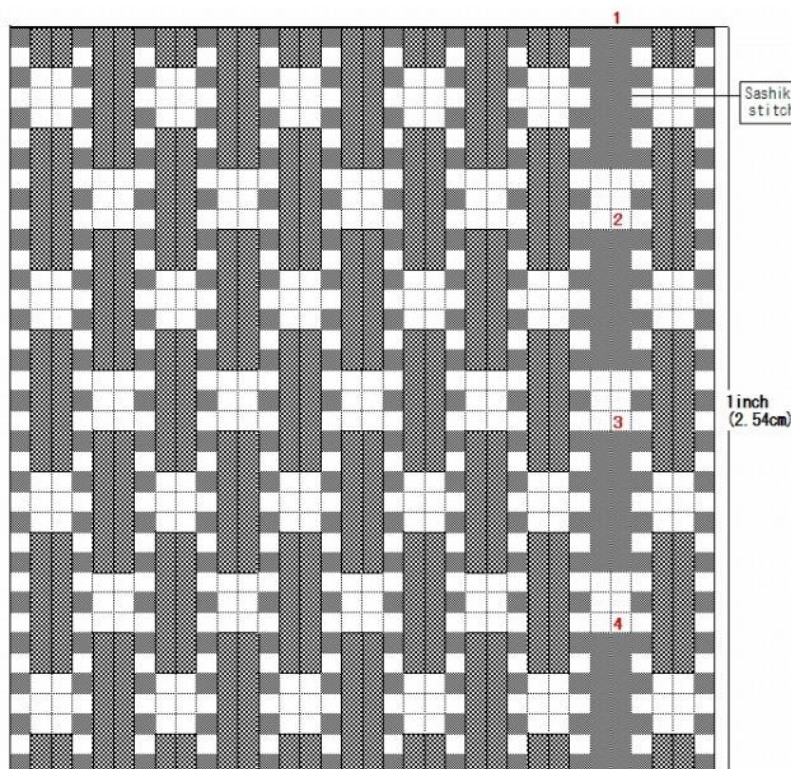
2b(2) Sashiko yarn direction must be horizontal when Judogi is placed vertically (when in use).

Note: Horizontal Sashiko yarns increase the fabric strength against horizontal tensile force. When the direction is vertical, the fabric becomes slippery causing difficulty of handgrip.

2b(3) Upper jacket part must be double-woven Sashiko fabric having enough strength.

2b(4) Number of float of Sashiko yarn must be 4 to 5 per inch after washed and dried.

Fig.4



Note: If fabric has not enough Sashiko yarns, it becomes softer and easy to be stretched causing difficulty for applying technics (Waza). On the other hand, if fabric has excess of Sashiko yarns, it becomes harder causing difficulty of handgrip.

2b(5) In order not to produce too thick/rigid, or too thin/soft fabric for upper jacket part, fabric standard is set to specify weaving density as in the following table. New and unused product after washed and dried must be within the range bellow:

Sashiko yarn and basic fabric weave (inch = 2,54 cm)

Yarns per inch (2.54 cm) for warp and weft (after washed and dried)

| Sashiko yarn (warp) | | Ground warp yarn | | Weft yarn | |
|---------------------|----------|------------------|----------|------------|----------|
| Yarn Count | per inch | Yarn Count | per inch | Yarn Count | per inch |
| 10 – 5ply | 20 to 25 | 10 – one ply | 80 to 96 | 16 – 3ply | 80 to 84 |
| 20 – 12ply | 20 to 25 | 30 – 2ply | 72 to 88 | 20 – 3ply | 84 to 88 |
| 10 – 6ply | 20 to 25 | 10 – 2ply | 40 to 48 | 10 – 2ply | 76 to 80 |
| 20 – 10ply | 20 to 25 | 20 – 2ply | 80 to 96 | | |

Fig.5

How to check the number of warps and wefts:

1. Prepare a loupe for textile use by which yarns in 1 square inch can be observed. (left picture)
2. Count the number of warps per inch for the surface fabric.
3. Count the wefts after removing warp yarns and Sashiko yarns from the fabric.

2b(6) The fabric for trousers and jacket collar must be twill weave.

2c) Sewing specifications

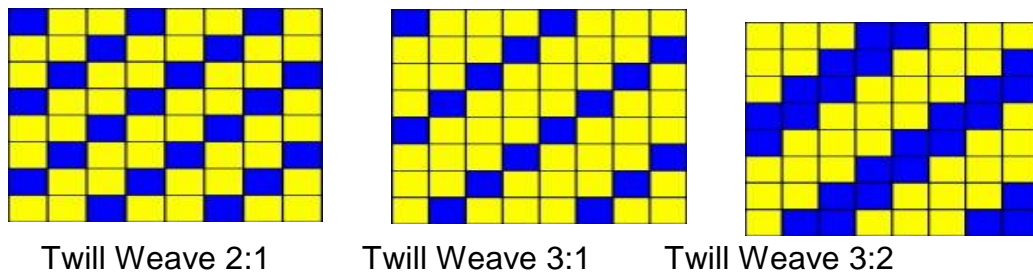
2c(1) Jacket

- Sashiko covering dimension must be in the range of 50 - 55% of the finished whole jacket length. Judogi for over 190 cm height, the range can be 45 - 55%.
- Sashiko part must not have sewing stitches other than at back joint, both side body, and both sleeves, except upper-lower joint. (See Fig.14, part D)
- Width of collar must be between 4 and 5 cm (Fig.13, part B). Collar must be sewn with 5-row straight stitch (or 4-row zigzag stitch equally spaced).
- The color of inside-collar fabric must not be seen from outside. The collar thickness must be up to 1 cm except the part including sewn seam in case that sewn seam is placed in the jacket back and extended to the collar.
- Collar assembly which sandwiches body Sashiko fabric and chest pad fabric must be in accordance with the following A, B, C and D.

2c(1)a Outer part of collar (essential part)

Twill weave cotton or cotton blend with more than 70% cotton fabric must be used (chosen from the three types):

Fig.6

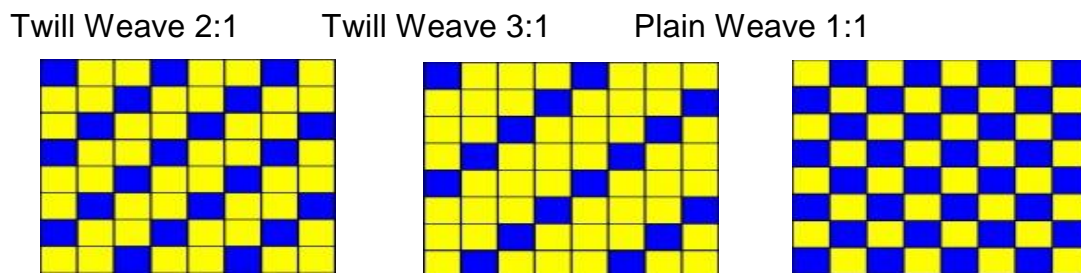


Yarn must be thinner than yarn count 10s. (2-ply yarn having equal resulting count can be used to increase strength.)

2c(1)b Reinforcement fabric for the collar (if used)

In the case of using reinforcement fabric for collar, cotton fabric with plain or twill weave.

Fig.7



Yarn must be thinner than yarn count 10s.

2c(1)c Main core material (essential part)

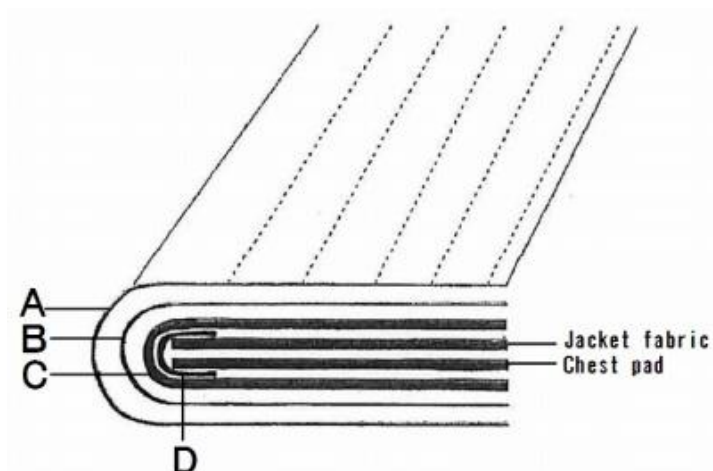
Main core material for collar must be one of the 4 materials, throstle spun yarn fabric (Garabo), non-woven fabric, felt, or diamond -patterned fabric.

2c(1)d Sub core material (if used)

In the case of using sub core material, use a material as specified in above C.

Note: The purpose of specification above is to prevent collar from becoming too hard to grip by setting the upper limit on the collar thickness.

Fig. 8: Cross-section of Collar (Example)

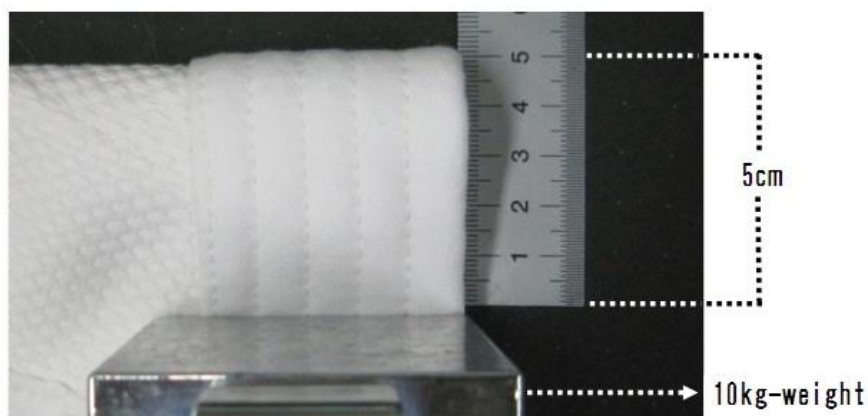


How to check the hardness of the collar (after washed and dried)

Fold the collar, at the chest pad inserted part, into two and place 10 kg-weight on 5cm point from the folding axis.

Note: At this time, do not touch around the folding axis to avoid any pressing force.

Fig. 9



The height (width) of collar folded into two must be within 4cm.

Fig.10A Allowed

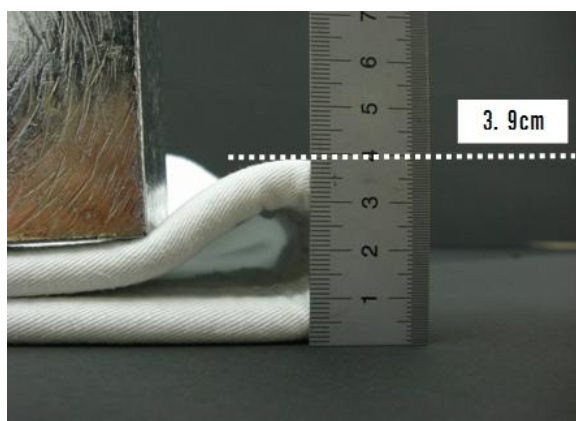
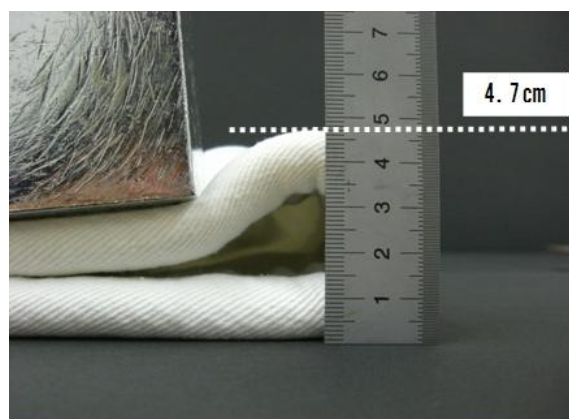


Fig.10B Not Allowed



Collar must be easily folded vertically (See the following pictures)



Fig.11A Allowed



Fig.11B Not allowed

- A cuff on a sleeve (turn-back of sleeve edge) must be within 3 cm wide except raised part.(Fig. 13, part C)
- Lower side of both sleeves must be sewn by rolled seam. (Fig. 13, part G)
- Reinforcement tape for jacket sleeve edge, trouser leg edge, and seaming part of upper and lower panel of jacket and some other parts must be thin cotton plain or twill weave, within 3cm wide, and use up to 3-row stitching.
- In the case of back-center seaming, the seam width must be within 3 cm. (Fig. 14, part B). Any reinforcement fabric can not be used for the back seaming.
- Overlock stitch for fabric raw edge is allowed to prevent fray.
- Use of reinforcement pad on the back side is allowed for 3 places: shoulder, chest and armpit (only one fabric for each place).

**2c(1)d(1) Shoulder pad:**

Up to 5-row machine-stitching must be used. The vertical length of the pad must be within about 1/3 of total back body length. The pad material must be the same Sashiko fabric as jacket fabric. (Fig. 14, part C)

2c(1)d(2) Chest pad:

Chest pad must be half oval-shaped and be attached from the base of the shoulder pad along the collar using up to 5-row stitch.

The width of the chest pad must be approximately 1/4 of the jacket back-body width. (Measurement based on back-hip joint width).

Excessively wide pad is not allowed. (Fig.13, part D) Pad material must be the same fabric as jacket fabric. Overlapping of shoulder pad and chest pad must be within 5cm.

2c(1)d(3) Armpit pad:

Armpit pad must be oval-shaped and be attached using 5-row to 8-row stitch.

Pad material must be the same fabric as jacket fabric, plain weave, or twill weave. (Fig. 13, part E)

Both side slit-ends are to be sewn with covering fabric. The length of side slit must be 1/2 to 2/3 of the lower jacket part length (Fig. 13, part F). A reinforcement fabric for above slit-ends is allowed within the size of 100 cm².

Note: Both side slits of jacket make Judo movement easier. (Only one slit in the center-back is not allowed.)

If slit is longer than 2/3 of the lower jacket part length, it will cause dishevelment.

The lowest part of the jacket must be 2/3 above from hip bone to above knee cap.

Fig.12

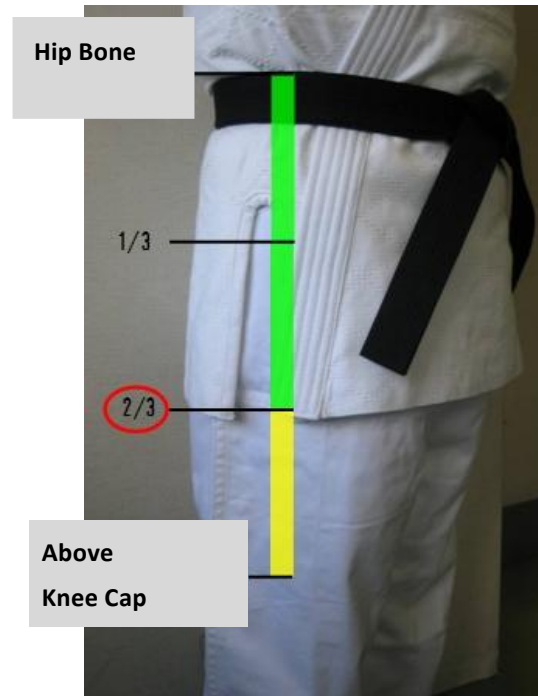


Fig. 13 (Front body of Judogi jacket)

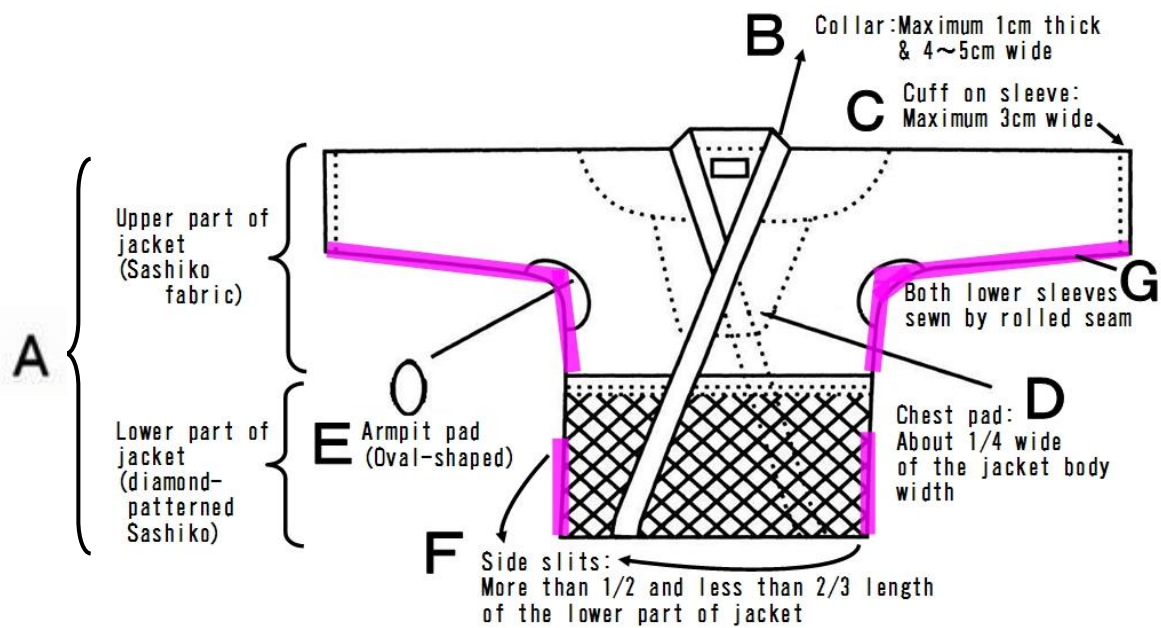
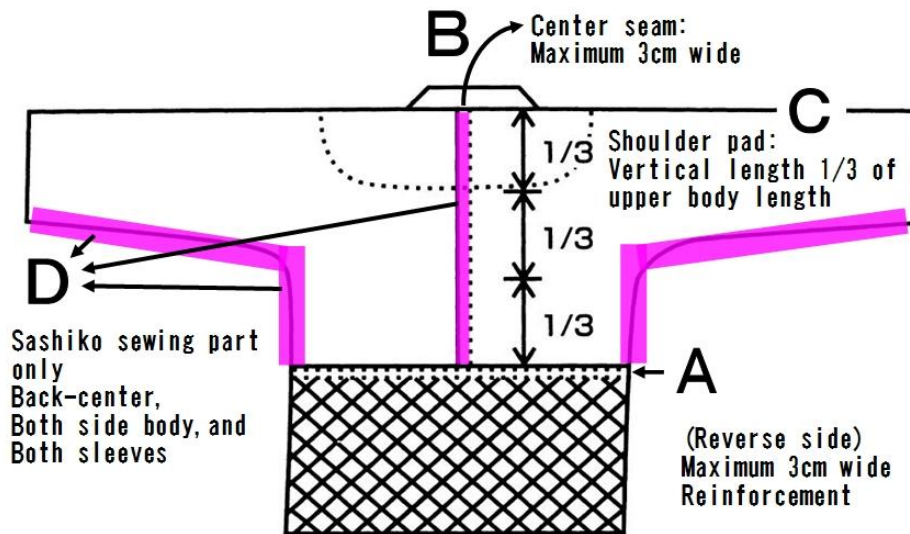
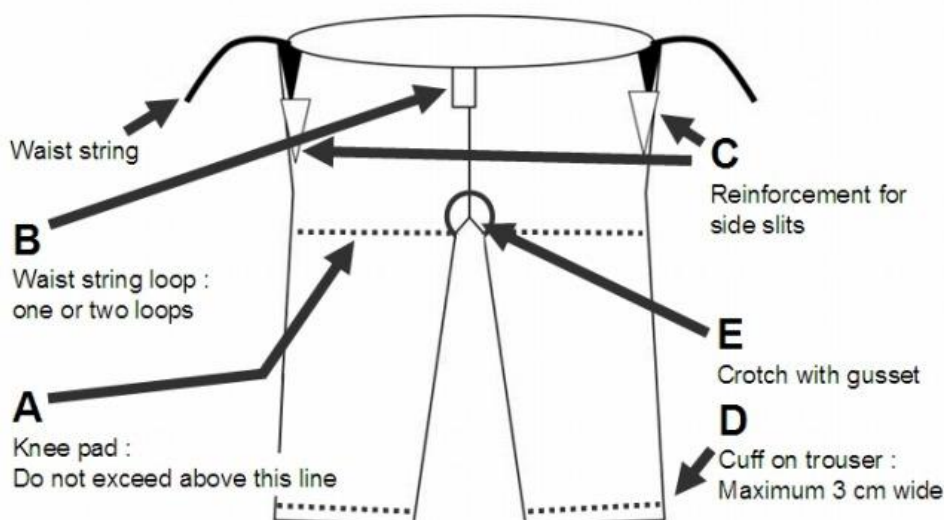


Fig. 14 (Back body of Judogi jacket)**2c(2) Trouser**

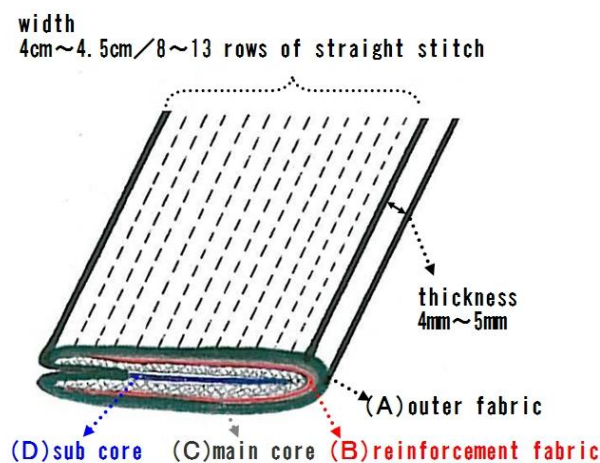
- Knee pad on the fabric back must use only one layer of the same fabric as the trouser. Knee pad must be placed lower than crotch part. (Fig. 15, part A)
- The waist string must certainly be equipped. The material must be the same fabric as the trouser. Elastic material such as rubber, etc is not allowed for string. Number of string loop must be one or two. (Fig. 15, part B)
- Reinforcement lining fabric for each side slit (waist part) is allowed to be used with the same fabric as trouser. (Fig. 15, part C)
- A cuff on a trouser (turn-back of the leg edge) must be within 3 cm wide except raised part (except protuberances). Thin tape fabric within 3cm wide is allowed to be used for covering. (Fig. 15, part D)
- Gusset must be stitched onto the crotch part. (Fig. 15, part E)
- Overlock stitch for fabric raw edge is allowed to prevent fray.

Fig. 15 (Trouser)

2c(3) Belt

- The belt of Judogi must use 100 % cotton fabric (A), The manufacturers must not produce such a belt as to be easily knot-loosen or broken, which can cause disturbance of the match.
- Main core material must be non-woven fabric. (must not be elastic materials such as rubber.)
- Reinforcement fabric (B) must be as specified in Fig. 16 using plain or twill weave with cotton yarn count 20/1 or lower. Sub core (D) is allowed to use as shown in Fig.16. Sub core material (center of the belt cross-section) must be the same as reinforcement fabric (B).
- The belt must be 4 to 4.5 cm wide
- The belt must be sewn using at least 8-row but no more than 13-row of straight stitch.
- The thickness of the belt must be between 4 mm and 5 mm.

Fig.16



(D) Use of sub core is optional.

Fig. 17



Example of suitable belt construction

Fig. 18

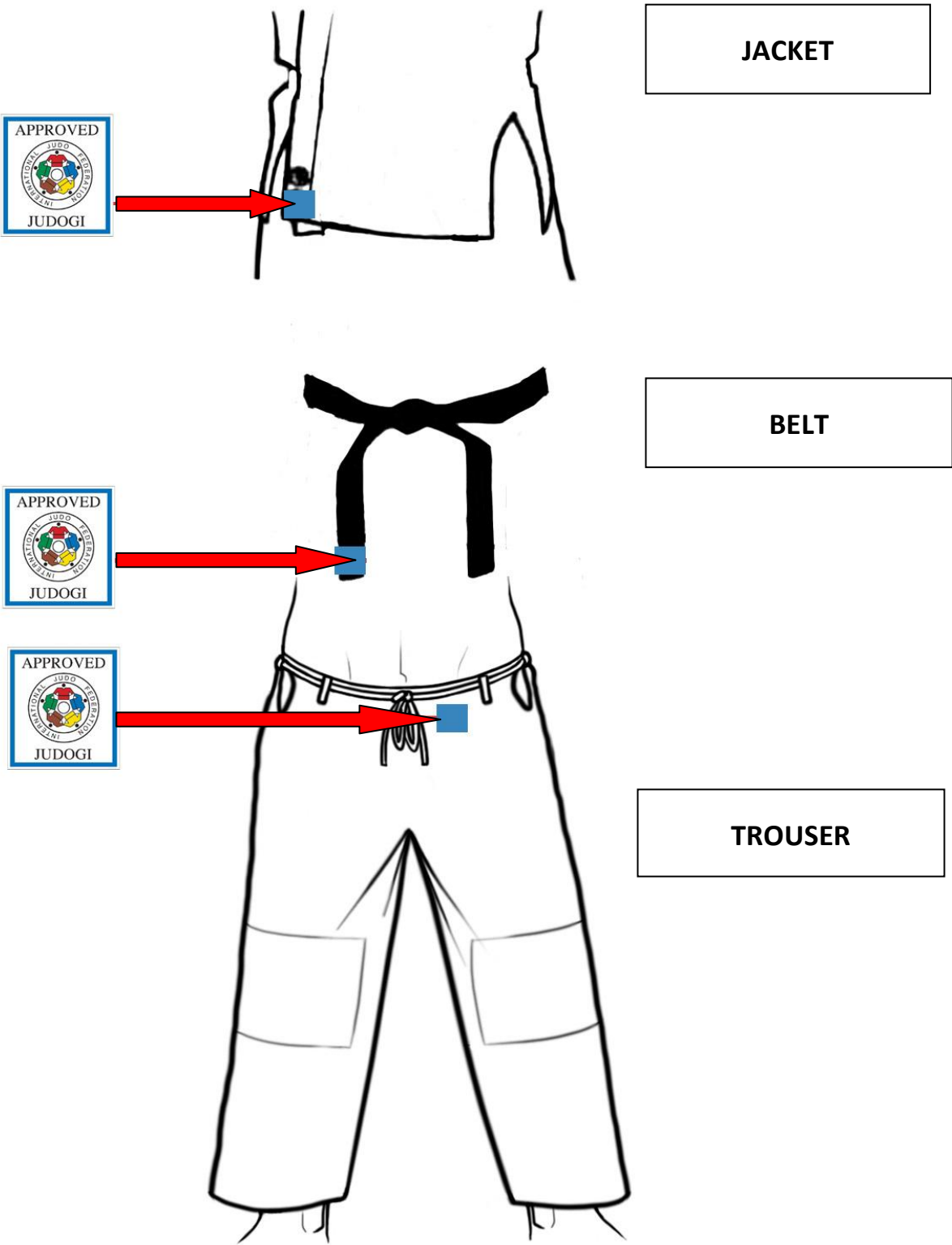


As shown in the above photo, belt should have the flexibility (softness). When pushing belt by hand from the both ends toward knot, the belt knot must not be loosening. Belt using too hard or slippery materials, which is easy to have knot loosening, is not allowed.

*For further information of the back identification, any marking or advertisement on Judogi, and sizes to be measured for Judogi control, please refer to IJF Refereeing rule and IJF SOR.



POSITIONNING OF THE TAG

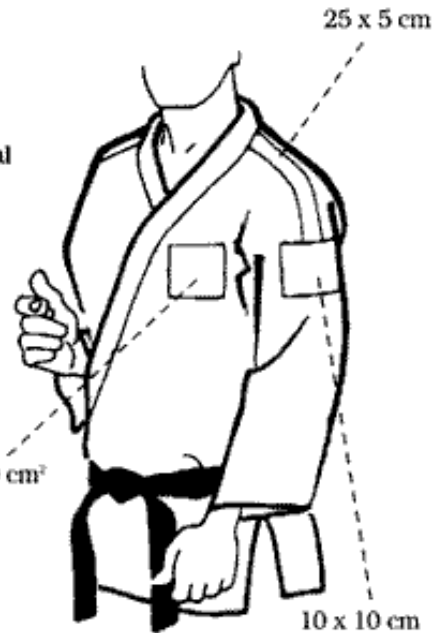


1er possibilité / 1st possibility

Promotion de la même marque/Same brand promotion(25x5cm)



Emblème national ou couleurs nationales
National emblem or national colours(max. 100 cm²)
Publicité / Advertising
(max. 10 x 10 cm)

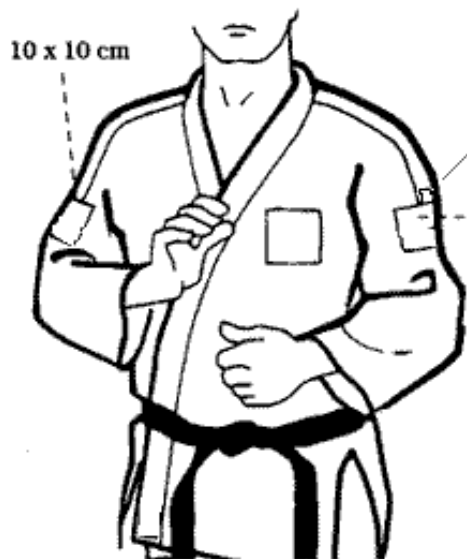


Marque du fabricant
Logo manufacturer (trade mark)
(20 cm²)



Note: Les fournisseurs officiels de la FIJ sont autorisés à placer le logo de la FIJ comme indiqué
The IJF Official suppliers are allowed to place the IJF logo as indicated

2e possibilité / 2nd possibility



Marque du fabricant
Logo manufacturer (trade mark)
(20 cm²)

10 x 10 cm



10 x 10 cm
sur chaque
manche

Il est admis de placer le logo du fournisseur sur une des manches mais à l'intérieur de l'aire 25 x 5 cm au lieu du bas sur le devant de la veste.

It is admitted to place the logo manufacturer on one of the sleeves but inside the 25 x 5 cm area instead of at the bottom front of the jacket.

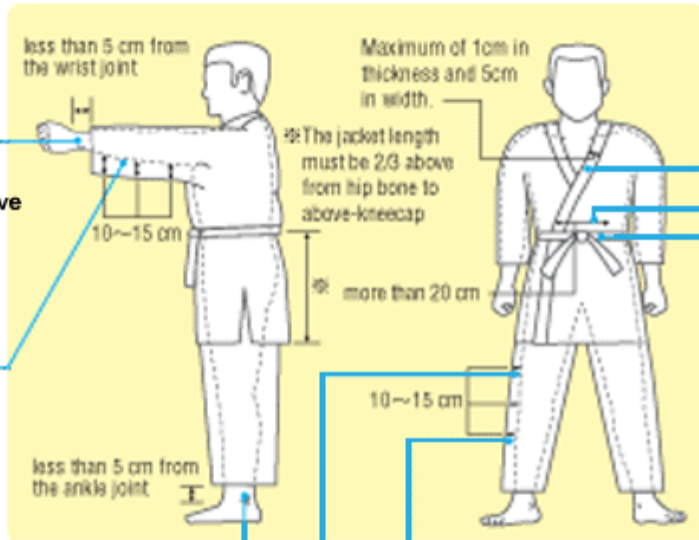
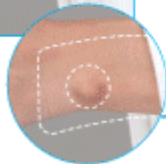


JUDOGI SOKUTEIKI

SOKUTEIKI for the Judogi control



To check the length of sleeve



To check the width of lapel and its thickness



To check the width of sleeve (10~15cm)



To check the length of trousers



To check the width of trousers (10~15cm)



To check the width of the overlap points (more than 20cm)



To check the length of the belt (20~30cm)



Validation of judogi control procedure during the IJF competitions



International Judo Federation

Validation of judogi control procedure during the IJF competitions

Judogi control is the responsibility of the IJF Sport Commission.

The Commission must inform, par email, Project and Development Director (JL Rouge) and Sport Director (H. Uemura) in charge of all the cases of breaching the rules:

Procedure during the IJF competitions:

1/ During the nations control (accreditations):

-Make the coach or his representative sign a document attesting that:

- Judogi and belts are of the IJF approved brand.
- Judogi are covered by the event back number and the marking (emblems, publicity...) complying with the IJF current sport rules.
- Judogi and belts were controlled for each athlete by the Sokuteiki and they comply with its criteria.
- The manufacturer's logo on the belt and the judogi complies with the IJF current sport rules.
- The trousers' and the jacket's color must be identical. It must be of a Pantone color complying with the IJF current sport rules.
- The athlete was informed that if the back number publicity is torn down, it is necessary to replace it on penalty of disqualification.

2/ In the standby area:

For each competition mat, the control will be realized by 2 referees of national level provided by the organizer.

During each contest, they must:

- Verify, using the optical reader, the validity of the judogi (trousers and jacket) and the belt brand.
- Verify, using the Sokuteiki, regulatory measures for the jacket, the trousers and the belt.
- Verify the presence of the event back number.
- Control the carrying of prohibited object.
- Verify the length of hand and foot nails and the personal hygiene of the athlete.



International Judo Federation



Information for IJF

Approved Judogi

Application to January 1st, 2011



Validation procedure for Judogi and belt

1. The manufacturer sends its request to the IJF General Treasurer.
2. Before starting the validation procedure, the IJF General Treasurer verifies solvency of the manufacturer.
3. In case if the manufacturer is not solvent, a letter will be sent to him by the IJF General Treasurer indicating the reasons of refusal.
In case if the manufacturer is solvent, the IJF General Treasurer informs the President, the General Secretary, the Project Director and responsible Sports Director about it, and sends to the manufacturer documents necessary for the homologation procedure.
4. The manufacturer sends the original application form (including the number of IJF TAG Label they wish to purchase and the choice of the laboratory) to the IJF General Treasurer.
The IJF General Treasurer informs the chosen testing laboratory about it.
5. The chosen testing laboratory sends the invoice for the testing fee to the manufacturer. As soon as the manufacturer receives the invoice, he makes the payment by bank transfer to the laboratory.
6. Having made the payment, the manufacturer sends the samples and a copy of the application form to the laboratory as requested in the validation documents.
The shipping expenses are at the charge of the manufacturer.
7. The laboratory carries out the tests at manufacturer's charge and keeps the samples.
8. Test results are sent to the IJF General Treasurer, with copy to the Project Director and the IJF Sports Director responsible for this project.
9. With consent of the Project Director and responsible Sports Director, the IJF General Treasurer informs the manufacturer about the results. If the Judogi model passes the test, it can obtain 'IJF Approval'.
The IJF General Treasurer sends the 'IJF Approved Certificate' and conditions to obtain the official IJF TAG Label (amount, IJF bank account information, etc) to the manufacturer who must return this document to the IJF General Treasurer.
As soon as the IJF General Treasurer receives this document, he sends to the manufacturer the invoice for the ordered TAG (1\$ per stamp) and for the IJF official supplier fee.
Having received the payment, the IJF General Treasurer sends the stamps and the document confirming the official supplier status.
10. If the Judogi or belt model is not in conformity to the regulation, the manufacturer will be advised to improve it. The testing fee is not refundable under any circumstances. The manufacturer must pay another testing fee when retrying the test.



LIST OF IJF APPROVED LABORATORIES for Judogi and Belt Tests

1. CRITT Sport Loisirs

Contact : M. Antoine BEAUFILS

Adresse : ZA du Sanital, 21 rue Albert Einstein
86100 Châtellerault
France

Téléphone: + 33 5 49 85 73 43

Fax: +33 5 49 21 76 20

Email : recherche@critt-sl.com

2. JAPAN TEXTILE PRODUCTS QUALITY AND TECHNOLOGY CENTER

Contact: Mme. Yoko OYA

Address: 7-19 Tomizawa-cho, Nihonbashi
Chuo-ku, Tokyo
103-0006 Japan

Téléphone : +81-3-3666-5384

Phone: +81-3-3666-5390

Fax : +81-3-3666-5394

Email : tk-g8@qtec.or.jp; shimizu@qtec.or.jp

* Please make any inquiry preferably by email.

Please send your Judogi samples, belt and the copy of your application form to one of those laboratories which you have chosen in the application form.

You must send the following Judogi samples (4 items) per each model:

1. One White Judogi (Size: 180cm)
2. One Blue Judogi (Size: 180cm)
3. One White Sashiko Fabric* (Length: 150cm)
4. One Blue Sashiko Fabric (Length: 150cm)

*Sashiko fabric is the fabric used for the upper part of Judogi jacket.

For Belt, you must send 2 items. (Length: 2,5m-3m)

Any material or Judogi and Belt samples for the Judogi or Belt test is not returnable.



Application Form for IJF Approved Judogi and Belt

| | |
|---|---|
| Company Name | |
| Model Name (Model Number) | 1. 2. 3. |
| Name of the President or Director | |
| Name of the contact person | |
| Company Address | |
| Telephone number | |
| Fax number | |
| Email | |
| Choice of Testing Laboratory (Testing Fee per Model) | 1. French: 845€ judogi /330€ : belt <input type="checkbox"/> 2. Japanese (150,000 JPY fixed for Judogi & 35,000 JPY fixed for belt) (185,000 JPY) <input type="checkbox"/> * Please circle either one of the two laboratories above. <input type="checkbox"/> <i>Number of models</i> |
| Date of Application | |
| Number of Logo Labels for purchase | |

NOTE:

* **Testing fee is per one model.**

You must make the payment promptly after you receive the invoice.

* The applicant must cover all charges such as testing fee, shipping fee and bank charges.

* We will send the IJF logo labels only when your Judogi or Belt model is approved by IJF, after validation of the tests by the laboratory and when the necessary payment is received by the laboratory.

* IJF supplier fee: 50 000 \$

* The minimum number of labels you can order is 3,000.

* The price is 1\$ per logo label.

You need one label for jacket, one label for trousers and one label for belt.

* **The bank account information for the payment will be provided to you with the invoice.**

Date:

Signature :

Quotation for Judogi Inspection (One Model)

CRITT Sport Loisirs
 ZA du Sanital, 21 rue Albert Einstein
 86100 Châtellerault
 France
 Phone: + 33 5 49 85 38 30
 Fax: +33 5 49 21 76 20

New JUDOGEI rules (November 2009)

| Test items | Remarks |
|---|--|
| Percentage of Textile composition Composition of Sashiko weave | Jacket & Trousers: Dissolution test and / or Microscopy test Drawing composition of Sashiko fabric |
| Number of yarn (Jacket only) | Sashiko yarn x 1 Base yarn x 2 |
| Weight of Sashiko fabric per m ² (After washed and dried) | |
| Degree of Density (After washed & dried) | Number of warps & wefts of Sashiko fabric |
| Composition of collar assembly | |
| Thickness (hardness) of Collar (After washed & dried) | |
| Pulling strength (Jacket only) | Less than 2,2 kN (Pulling vertically Sashiko fabric) |
| Testing Charge (To Check appearance & conformity to the rule) | Per one model |
| Report (Determination of Approval) (Blue Judogi) | |
| Color Fastness of Washing | |
| Color Check (Visual Test) | Jacket & Trousers Washing |
| Grand Total for JUDOGEI | 845 € (discounted and fixed) |

New JUDOGEI rules (November 2009) on belt

| Test items | Remarks |
|-----------------------------------|--|
| Percentage of Textile composition | 1 to 4 different fabrics |
| cotton yarn count 20/1 or lower | To be exactly defined later |
| Dimension analysis | - |
| Grand Total for BELT | 330 € (discounted and fixed) without cotton yarn count 20/1 |

Japan Textile Products Quality and Technology Center

Package Fee for Judogi Test/ Inspection per One Model and one Belt

19th October 2009

Japan Textile Products Quality and Technology Center (QTEC)
 Address: 7-19, Nihonbashi Tomizawa-cho, Chuo-ku, Tokyo, 103-0006 Japan
 Contact: Yoko OYA
 Fax: 81-3-3665-5383
 e-mail: shimizu@qtec.or.jp

Test/Inspection in accordance with Guidance For IJF Approved Judogi

| | Test / Investigation Item | Remarks |
|---|--|--|
| 1 | Fiber Content | Jacket and Trousers, Belt |
| 2 | Fabric Weave | Upper part of Jacket, Belt |
| 3 | Fabric Yarn Count | Sashiko yarns and base yarns |
| 4 | Fabric Weight | Upper part of Jacket, after wash/dry |
| 5 | Fabric Density | Sashiko fabric and base fabric, number of yarns per inch |
| 6 | Collar Hardness Test | Bending method, after wash/dry, within 4.0 cm |
| 7 | Thickness of reinforced part | 3 places for Jacket, 1 place for Trousers, Belt |
| 8 | Breaking Strength of upper jacket JIS L 1096, 8.1.2 Breaking Strength, ravelled strip, sample width: 5 cm constant rate of extension: 200 mm/min. | Breaking Strength in vertical direction when in use and Breaking Strength of Belt : More than 2200 N (additional rule to the JIF guidance) |
| 9 | Inspection of sewing and fabrication | Detailed inspection in accordance with IJF Guidance including Belt |
| 10 | Examination of Belt composition | Photo of cross-section and side view Used materials attached in the report |
| 11 | Extra Test for Blue Judogi only Blue Color Measurement | Visual Check by using Pantone Scale after wash/dry 18-4051TCX(TPX) – 18-4039TCX(TPX), or 285M – 286M |
| Issue of Test and Investigation Report | | Including total judgment of Pass or Fail to the requirements by IJF guidance (Report written in English) |
| Test and Inspection Fee for judogi per one model | | JPY 150,000 |
| Price for Test and Inspection Fee for one Belt | | JPY 35,000 |
| Total Package Fee for Judogi and belt | | Japanese Yen 185,000 |

For detailed check points, please refer to IJF Judogi Test and Inspection Check Sheet.

IJF Judogi (including Belt) Test and Inspection Check Sheet (19th October 2009)

Judogi Model : _____ Judogi Supplier :

Name of Checker: _____ Date of Check:

Please use this check sheet always with reference to “Guidance for IJF Approved Judogi”.

This check sheet includes some additional rules supporting the Guidance.

Pass Fail

| | | | | |
|---|----|--|--|--|
| A. Fabric/Material for JACKET | 1 | Fiber : Cotton ≥ 70 %, Chemical fibers allowed up to 30 %, Good hand-feel | | |
| | 2 | Upper jacket fabric strength in vertical direction when in use: ≥ 2200 N This is additional rule to the IJF Guidance (JIS L 1096, 8.1.2 Breaking Strength, raveled strip, sample width: 5 cm) | | |
| | 3 | Upper jacket fabric (Sashiko part) weight: 700–1000 g/m ² (after wash/dry) | | |
| | 4 | Color : White: natural cotton, Blue: judgment by Pantone scale after wash/dry [18-4051TCX(TPX) – 18-4039TCX(TPX), or 285M – 286M] | | |
| | 5 | Upper: double Sashiko Weave, Lower: Plain, or Twill with diamond pattern | | |
| | 6 | Float number of Sashiko: 4 to 5 / inch (after wash/dry) | | |
| | 7 | Warp/weft Yarn Count and Density for Sashiko fabric (after wash/dry) | | |
| B. Fabric/Material for TROUSERS | 1 | Fiber : Cotton ≥ 70 %, Chemical fibers allowed up to 30 %, Good hand-feel | | |
| | 2 | Color : White: natural cotton, Blue: judgment by Pantone scale after wash/dry [18-4051TCX(TPX) – 18-4039TCX(TPX), or 285M – 286M] | | |
| C. Sewing/ Fabrication for JACKET | 1 | Reverse use of the fabric is not allowed. | | |
| | 2 | Sashiko lines (warp line) must be horizontal when wearing jacket. | | |
| | 3 | Upper Sashiko fabric part must be 50–55 % of total length of the jacket | | |
| | 4 | Stitches allowed only for back joint, both sleeves, and both body sides in upper Sashiko part. (except joint of upper and lower jacket) | | |
| | 5 | Collar : Twill weave, width: 4 – 5 cm with 5-row stitch (4-row for zigzag) Inside material of collar must not be exposed outside. | | |
| | 6 | Collar thickness: No more than 1cm (Except back joint part, if applicable) | | |
| | 7 | Collar weave: Twill, Construction according to Guidance c) (1) A, B, C, D | | |
| | 8 | Collar Hardness Test: within 4.0 cm (after wash/dry, weight 10 kg) | | |
| | 9 | Collar must be easily folded vertically into two at chest-pad inserted place. | | |
| | 10 | Sleeve cuff width: within 3 cm | | |
| | 11 | Lower side of sleeves must be seamed by rolled seam. | | |
| | 12 | Reinforcement tape (except side slit) : within 3cm wide, cotton thin fabric, plain or twill, up to 3-row stitch | | |
| | 13 | Jacket back joint width: within 3 cm (if applicable) Reinforcement not allowed | | |
| | 14 | Shoulder pad : same Sashiko fabric, up to 5–row stitch, within 1/3 back-body | | |
| | 15 | Chest pad: same Sashiko fabric, one half-oval shaped, up to 5–row stitch, The length must be about 1/4 of back body hip-joint length. | | |
| | 16 | Overlap of shoulder pad and chest pad: within 5cm | | |
| | 17 | Armpit pad : Oval, 5 to 8-row stitch, same Sashiko fabric, plain, or twill | | |
| | 18 | Reinforcement tape for both side slit: cotton plain or twill to cover slit edge Side slit length is 1/2 to 2/3 of the lower jacket. One back slit not allowed. | | |
| | 19 | A reinforcement fabric for above slit-ends allowed: within 100 cm ² | | |

IJF Judogi (including Belt) Test and Inspection Check Sheet (19th October 2009)

| | | | | |
|---|---|--|--|--|
| D. Sewing/ Fabrication for TROUSERS | 1 | Reverse use of the fabric is not allowed. | | |
| | 2 | Knee pad allowed: same fabric, on backside, below lower part of crotch | | |
| | 3 | Waist string needed: same fabric, rubber band not allowed, 1 or 2 string loops | | |
| | 4 | Reinforcement fabric for both side slit allowed: same fabric on the backside | | |
| | 5 | Gusset must be stitched onto the crotch part. | | |
| | 6 | Trouser cuff: within 3 cm wide, reinforcement tape allowed | | |
| | 7 | Reinforcement tape for cuff: within 3cm wide, cotton thin fabric, plain or twill, up to 3-row stitch | | |

| | | | | |
|---------|---|---|--|--|
| E. Belt | 1 | Outer-face fabric must be 100 % cotton. Belt must be sturdy and not be easily loosen or broken. | | |
| | 2 | Main core must be non-woven fabric. (rubbers or elastics not allowed) | | |
| | 3 | Reinforcement fabric must be cotton plain or twill using yarn count 20/1 or finer. | | |
| | 4 | Sub-core (optional), if used, must be the same material as reinforcement. | | |
| | 5 | Belt width must be 4 cm to 4.5 cm | | |
| | 6 | Stitch: 8 to 13 rows of straight stitches. | | |
| | 7 | The thickness of Belt must be in the range of 4 mm to 5 mm. | | |
| | 8 | Belt should have flexibility (softness). When pushing belt by hand from the both ends toward knot, the belt knot must not be loosening. | | |

Anyone who is involved in IJF Judogi can use this check sheet for self-checking.
Official testing/inspection organizations also use this check sheet as a part of their test/inspection report.

TEST REPORT (Example)Date of Issue: 7th July 2009**APPLICATION**

| | |
|----------------------------|---|
| Name of Judogi Supplier | XXX Co., Ltd |
| Judogi Model (product No.) | xxx |
| Belt Model (product No.) | xxxx |
| Application No. | xxxxxxx |
| Test Items | Test and Inspection by “Guidance for JIF Approved Judogi” |
| Sample Received Date | 20 th June 2009 |
| Sample Received by | Yoko OYA (Signature: _____) |
| Test and Inspection Date | 6 th July 2009 |

TEST RESULTS

| Judogi Model No. xxxxxxx | Pass or Fail |
|--------------------------------------|--------------|
| A. Fabric/Material for JACKET | Pass |
| B. Fabric/Material for TROUSERS | Pass |
| C. Sewing / Fabrication for JACKET | Fail |
| D. Sewing / Fabrication for TROUSERS | Pass |
| E. Belt (Model No. xxxx) | Pass |
| Final Judgment | FAIL |

COMMENT AND RECOMENDATION

Failed Check Point: C-6, Collar Thickness is measured 13 mm, which must be 10 mm or less.

Yoko OYA, Testing Manager of Tobu Office
Japan Textile Products Quality and Technology Center

 **Japan Textile Products Quality and Technology Center**

* See Detailed Check Sheet attached next 2 pages

DETAILED CHECK RESULTS

Pass Fail

| | | Pass | Fail | |
|-------------------------------|----|--|------|---|
| A. Fabric/Material JACKET | 1 | Fiber : Cotton ≥ 70 %, Chemical fibers allowed up to 30 %, Good hand-feel | ✓ | |
| | 2 | Upper jacket fabric strength in vertical direction when in use: ≥ 2200 N This is additional rule to the IJF Guidance (JIS L 1096, 8.1.2 Breaking Strength, raveled strip, sample width: 5 cm) | ✓ | |
| | 3 | Upper jacket fabric (Sashiko part) weight: 700–1000 g/m ² (after wash/dry) | ✓ | |
| | 4 | Color : White: natural cotton, Blue: judgment by Pantone scale after wash/dry [18-4051TCX(TPX) – 18-4039TCX(TPX), or 285M – 286M] | ✓ | |
| | 5 | Upper: double SashikoWeave, Lower: Plain, or Twill with diamond pattern | ✓ | |
| | 6 | Float number of Sashiko: 4 to 5 / inch (after wash/dry) | ✓ | |
| | 7 | Warp/weft Yarn Count and Density for Sashiko fabric (after wash/dry) | ✓ | |
| B. Fabric/Material TROUSERS | 1 | Fiber : Cotton ≥ 70 %, Chemical fibers allowed up to 30 %, Good hand-feel | ✓ | |
| | 2 | Color : White: natural cotton, Blue: judgment by Pantone scale after wash/dry [18-4051TCX(TPX) – 18-4039TCX(TPX), or 285M – 286M] | ✓ | |
| C. Sewing/ Fabrication JACKET | 1 | Reverse use of the fabric is not allowed. | ✓ | |
| | 2 | Sashiko lines (warp line) must be horizontal when wearing jacket. | ✓ | |
| | 3 | Upper Sashiko fabric part must be 50 – 55 % of total length of the jacket | ✓ | |
| | 4 | Stitches allowed only for back joint, both sleeves, and both body sides in upper Sashiko part. (except joint of upper and lower jacket) | ✓ | |
| | 5 | Collar : Twill weave, width: 4 – 5 cm with 5-row stitch (4-row for zigzag) Inside material of collar must not be exposed outside. | | ✓ |
| | 6 | Collar thickness: No more than 1cm (Except back joint part, if applicable) | ✓ | |
| | 7 | Collar weave: Twill, Construction according to Guidance c) (1) A, B, C, D | ✓ | |
| | 8 | Collar Hardness Test: within 4.0 cm (after wash/dry, weight 10 kg) | ✓ | |
| | 9 | Collar must be easily folded vertically into two at chest-pad inserted place. | ✓ | |
| | 10 | Sleeve cuff width: within 3 cm | ✓ | |
| | 11 | Lower side of sleeves must be seamed by rolled seam. | ✓ | |
| | 12 | Reinforcement tape (except side slit) : within 3cm wide, cotton thin fabric, plain or twill, up to 3-row stitch | ✓ | |
| | 13 | Jacket back joint width: within 3 cm (if applicable) Reinforcement not allowed | ✓ | |
| | 14 | Shoulder pad : same Sashiko fabric, up to 5–row stitch, within 1/3 back-body | ✓ | |
| | 15 | Chest pad: same Sashiko fabric, one half-oval shaped, up to 5–row stitch, The length must be about 1/4 of back body hip-joint length. | ✓ | |
| | 16 | Overlap of shoulder pad and chest pad: within 5cm | ✓ | |
| | 17 | Armpit pad : Oval, 5 to 8-row stitch, same Sashiko fabric, plain, or twill | ✓ | |
| | 18 | Reinforcement tape for both side slit: cotton plain or twill to cover slit edge Side slit length is 1/2 to 2/3 of the lower jacket. One back slit not allowed. | ✓ | |
| | 19 | A reinforcement fabric for above slit-ends allowed: within 100 cm ² | ✓ | |


Japan Textile Products Quality and Technology Center

Pass Fail

| | | | | |
|---------------------------------------|---|--|---|--|
| D. Sewing/ Fabrication TROUSERS | 1 | Reverse use of the fabric is not allowed. | ✓ | |
| | 2 | Knee pad allowed: same fabric, on backside, below lower part of crotch | ✓ | |
| | 3 | Waist string needed: same fabric, rubber band not allowed, 1 or 2 string loops | ✓ | |
| | 4 | Reinforcement fabric for both side slit allowed: same fabric on the backside | ✓ | |
| | 5 | Gusset must be stitched onto the crotch part. | ✓ | |
| | 6 | Trouser cuff: within 3 cm wide, reinforcement tape allowed | ✓ | |
| | 7 | Reinforcement tape for cuff: within 3cm wide, cotton thin fabric, plain or twill, up to 3-row stitch | ✓ | |

| | | | | |
|---------|---|--|---|--|
| E. Belt | 1 | Outer-face fabric must be 100 % cotton. Belt must be sturdy and not be easily loosen or broken. But the belt must have adequate flexibility and softness | ✓ | |
| | 2 | Main core must be non-woven fabric. (rubbers or elastics not allowed) | ✓ | |
| | 3 | Reinforcement fabric must be cotton plain or twill using yarn count 20/1 or finer. | ✓ | |
| | 4 | Sub-core (optional), if used, must be the same material as reinforcement. | ✓ | |
| | 5 | Belt width must be 4 cm to 5 cm | ✓ | |
| | 6 | Stitch: 8 to 13 rows of straight stitches. | ✓ | |
| | 7 | When pushing belt by hand from the both ends toward knot, the belt knot must not be loosening. | ✓ | |